

How To Use RB-Joy To Configure Your Wheel Buttons

by Rolly (pronounced Raleigh) Dickerson
(also known as RahlLee in the sim-racing community)

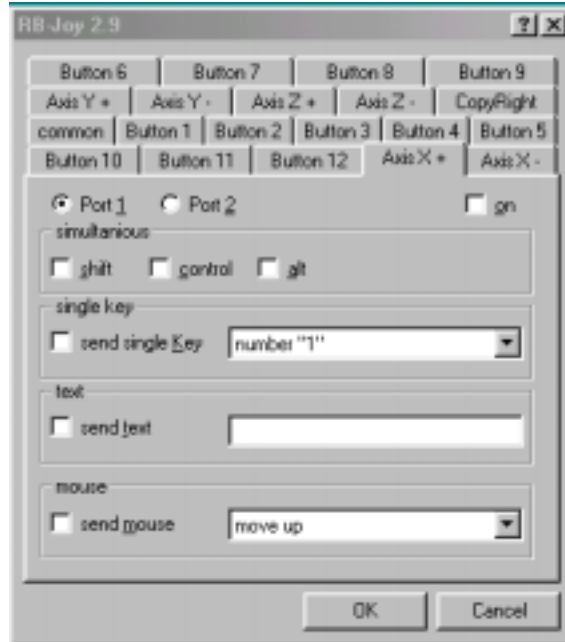
Some of the newer force feedback wheels have programmable buttons, but some manufacturers may not include a program for your wheel buttons. If this is your situation, you might want to try RB-Joy from [RB-Soft](#) by Ralf Bierdermann from Germany. Although the site is written in German, click on the RB-Joy link at the top of the page and download the program and then read the rbjoy.txt file written in English. My experience stems from configuring this program with my [Act-Labs](#) Force RS Wheel and RS Shifter for [Nascar Racing 3](#) using Windows 98; however, the basic setup may be similar for other wheels and games as well. There may be alternative or better methods for configuring your wheel with RB-Joy, but this method has worked well for me. *For any part of this description that is specific for the Act-Labs wheel, the type will be in italics.*

1. First you need to be sure that your wheel is working properly, is configured correctly, and works appropriately in the game you plan to use RB-Joy. Then you need to know which buttons can be used on the wheel and their button numbers. Your owner's manual should have this information. *With the Act-Labs wheel and shifter, wheel buttons 5, 3, 4, 8, and 9 are enabled whereas 6, 7, 1, 2, and 10 through 13 are disabled (see the manual for which buttons are which). Dash buttons 10, 11, and 12 are also enabled, but are not recommended to be used per the owner's manual; however, I have safely used buttons 10 (left dash button) and 11 (top right dash button) without problems in Nascar Racing 3.*

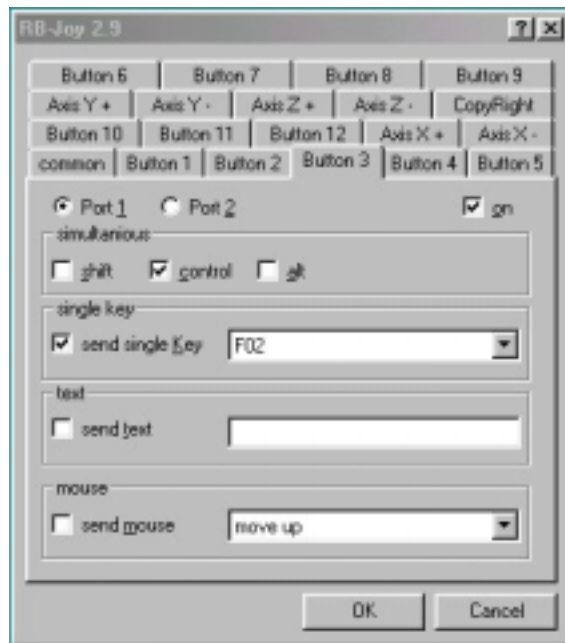
2. Create a directory on your computer and unzip the files into that directory. Read the rbjoy.txt file on how to install and which *.exe file to use when running the program (I need to use the rbjoys.exe file and NOT the rbjoyd.exe). After double clicking on the rbjoys.exe file, you should see a joystick icon in the lower right-hand corner of the windows task bar. A single left click will bring up a menu with three choices: Load, Save as and Configure. Select configure by a single left click and the dialog box for RB-Joy should appear. Find the "common" tab and single click on it. This is the menu you should now be seeing. If there are any dialog boxes checked, uncheck them so all boxes are blank just like what is shown in the figure to the right.



3. Single click on folder tab named "Axis X+." The following menu should appear. Select Port 1 and then make sure the "on" dialog box to the right of the Port options is unchecked. Also be sure that the send single Key and other square dialog boxes are unchecked (I believe the default was to check the "on" box and "send single key" box. Therefore, all boxes except port should be blank just like as shown on the right. Now go back and make sure all the Axis tabs (X+, X-, Y+, Y-, Z+, Z-) are unchecked like in this menu screen. If you skip this step, your background (grandstands, sky/clouds, etc.) will flicker when you try to race in Nascar Racing 3 and will worsen when you apply the throttle or brake.



4. Configure your buttons. Which buttons are active on your wheel? Check your wheel manual and then left click on the folder tab of the button you wish to configure. *For the Act-Labs Force RS wheel and RS shifter system, there are 5 active buttons on the wheel as the shifter replaces some of the functions of the wheel buttons.* My goal with RB-Joy was to program my wheel and panel buttons for the common autochat messages I use in online racing for Nascar Racing 3. I plan to designate button 3 as autochat message #2 (RahLee exiting pit, go high!) in Nascar Racing 3. To activate autochat #2 in Nascar Racing 3, you must simultaneously press Control-F2 while racing online. Make sure Port 1 is selected and the "on" dialog box to the right is also checked. Select the simultaneous box for the "control" key. Also check the "send single Key" dialog box and use the arrow to the right of the "send single Key" box to select the key (F2) from the menu that you wish to use. Do all the other buttons on your wheel. Now left click on "OK."



That is all there is to it. Go take it for a drive and see how it works. If you plan to use RB-Joy for more than one game with different commands, then you must save this configuration. Left click on the joystick icon in your system tray in the right hand corner of your computer screen. Select "save as" and give it a name (e.g., nascar racing3.cfg). Save the configuration file in the same directory as RB-Joy. Go ahead and configure your wheel for your next favorite driving sim and save. The program keeps the last program used so be sure to load the right program prior to starting your game (left click on joystick icon, select "load", pick out correct *.cfg file by left clicking, and then hit open, and you are ready to go)! See you on the track!

This material is the property of Roland Dickerson. This material cannot be posted on any other web site or other form of media without expressed written consent from the author.